



## **VENDOR OVERVIEW**

Value-add distribution of enterprise  
class security and network solutions  
and services

## ABOUT US

Kite is a UK-focused, value-added distributor that specialises in bringing innovative and disruptive technologies to the UK channel. Our management have over 50 years of accumulated channel experience, including launching and building markets for some of the most readily recognisable security and networking brands around today.

Our aim at Kite is to provide each of our vendor and reseller partners with a market-leading distribution engine for building incremental revenue. We are also ardent believers in maintaining quality at all times. We endeavour to set a very high level of partner satisfaction from the point the inquiry is picked up, our understanding of the vendors proposition, quote accuracy and turnaround all the way through to delivery and post-sale professional services.

We firmly believe that the generation of incremental revenue is a goal more easily accomplished with distribution and the vendor both working in tandem with the partner. For that reason we leverage our know-how and complementary services to assist in the creation & closure of pipeline opportunity.

## OUR VENDORS

**infoblox**

  
**ENTRUST**

SENSE  ON

**THALES**  
Building a future we can all trust

 **FORESCOUT**

 **CoreView**

**hexnode**

**imperva**  
a Thales company

 **KEYSIGHT**

 **HOXHUNT**

 **Skyhigh**  
Security

 **immersive**

**Bitdefender**

 **cyberbit**

**corero**  
[ NETWORK SECURITY ]



## **INFOBLOX**

### **DNS SECURITY & DDI**

Infoblox use intelligent DNS and user context to stop threats other solutions will miss, enabling organisations to build safer, more resilient environments.



## **ENTRUST**

### **IDENTITY, PAYMENTS & DATA SECURITY**

Entrust offer an unmatched breadth of solutions that are critical to enabling trust for multi-cloud deployments, mobile identities, hybrid work encryption, and more.



## **SENSEON**

### **AI-DRIVEN NDR, EDR & MDR**

Complete security, without the complexity. Protect your endpoints, network, users, and cloud. One platform. Deployed in minutes. Backed by a 24/7 security team.



## **THALES**

### **DATA PROTECTION & AUTHENTICATION**

A leader in data protection, providing everything an organisation needs to discover and encrypt their data, as well as HSMs and key lifecycle management.



## **FORESCOUT**

### **COMPLETE ASSET VISIBILITY**

A global cybersecurity leader, continuously identifies, protects and helps ensure the compliance of all managed and unmanaged connected cyber assets.



## **COREVIEW**

### **BEST PRACTICE FOR M365**

Global Leader in Effortless M365 Security, Governance, and Administration. Offering an end-to-end solution that stretches across the whole M365 ecosystem.



## **HEXNODE**

### **UNIFIED ENDPOINT MANAGEMENT**

Hexnode's UEM is an industry-leading endpoint management solution that offers a rich set of features aimed at securing, managing, and remotely monitoring devices within the enterprise



## **IMPERVA, a Thales Company**

### **APPLICATION & DATA SECURITY**

Protects all digital experiences, from business logic to APIs, microservices, and the data layer, and from vulnerable, legacy environments to cloud-first organisations.



## **KEYSIGHT**

### **NETWORK TEST & VISIBILITY**

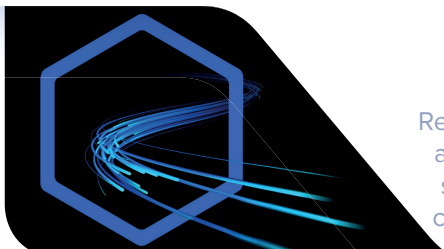
Keysight's solutions validate network functions, test the integrity of security infrastructure, and deliver an end-to-end view of the network.



## **HOXHUNT**

### **HUMAN RISK MANAGEMENT**

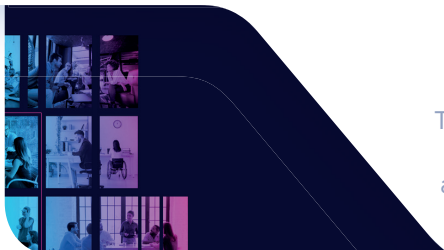
Combining AI and behavioural science, to create individualised micro-training experiences to drive behaviour change and measurably lower risk.



## **SKYHIGH SECURITY**

### **SECURITY SERVICE EDGE**

Real-time data and threat protection against advanced and cloud-enabled threats and safeguards data across all vectors (web, cloud, email, and private apps) and users.



## **IMMERSIVE**

### **PEOPLE-CENTRIC CYBER RESILIENCE**

The Immersive Labs platform enables you to evidence your cyber capability, risk, and resilience across technical teams for the first time.



## **BITDEFENDER**

### **EDR & MDR FOR MSPS**

Bitdefender is a cybersecurity leader delivering best-in-class threat prevention, detection, and response solutions worldwide.



## **CORERO**

### **DDOS PROTECTION**

A leader in real-time, high-performance, automatic DDoS attack protection, with comprehensive attack visibility, analytics, and reporting.



## **CYBERBIT**

### **CYBER SKILLS DEVELOPMENT PLATFORM**

Developed the first-ever hyper-realistic cyber skilling platform, ensuring that cybersecurity professionals have the right knowledge, skills, and experience to excel.



## Contact Details

Avalon Way | Executive House | Leicester | LE7 7GR

[sales@kitedistribution.co.uk](mailto:sales@kitedistribution.co.uk) | 0116 216 5600



SCAN ME

